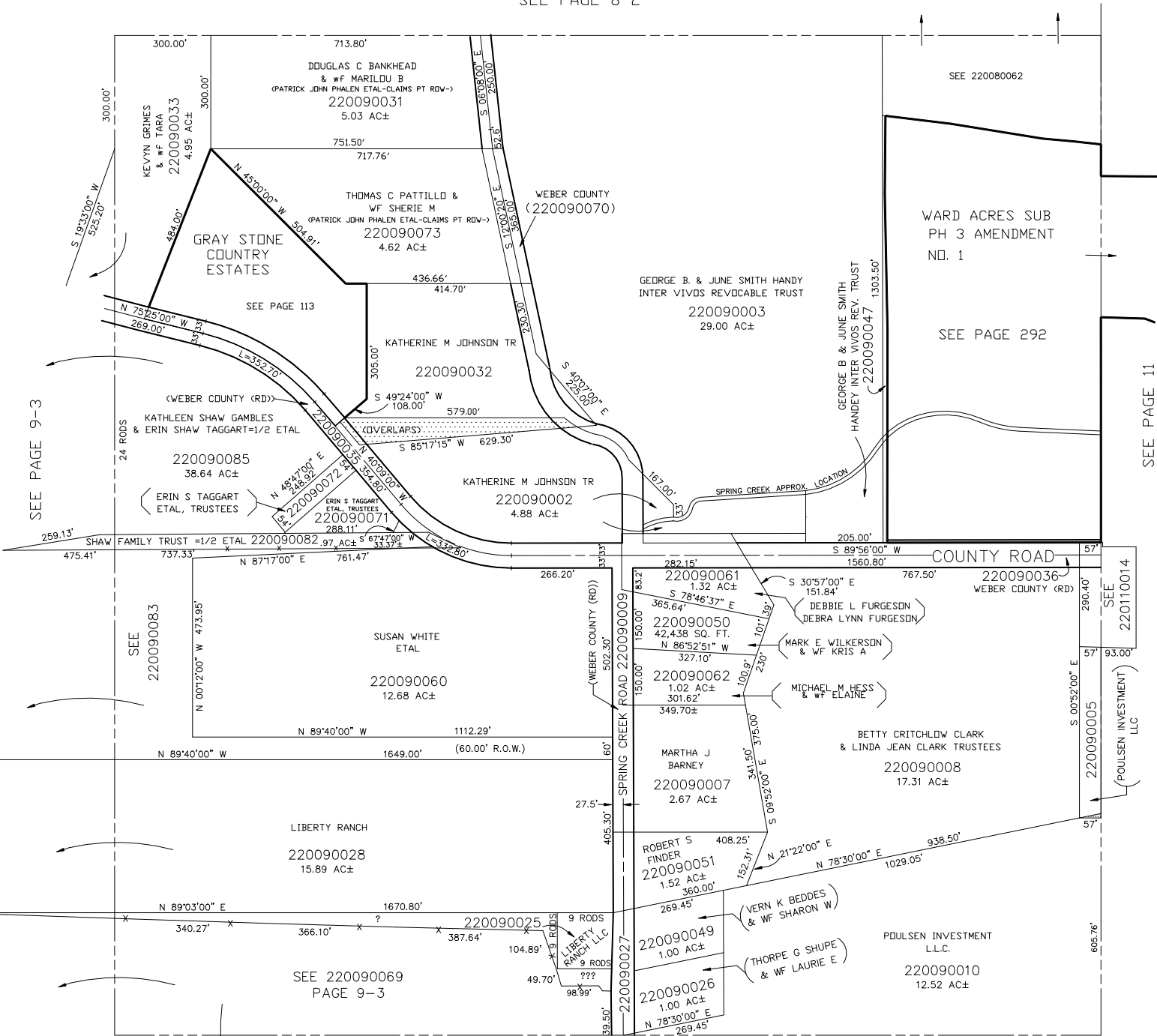


N.E. 1/4  
SECTION 19, T7N., R.1E., S.L.B. & M.

LIBERTY DISTRICT  
SCALE 1" = 200'

TAXING UNIT: 36

SEE PAGE 8-2



SEE PAGE 9-3

SEE 220090083

SEE 220090069  
PAGE 9-3

SEE PAGE 9-1

SEE PAGE 11

SEE 220110014

SEE 220090005  
(POULSEN INVESTMENT) LLC